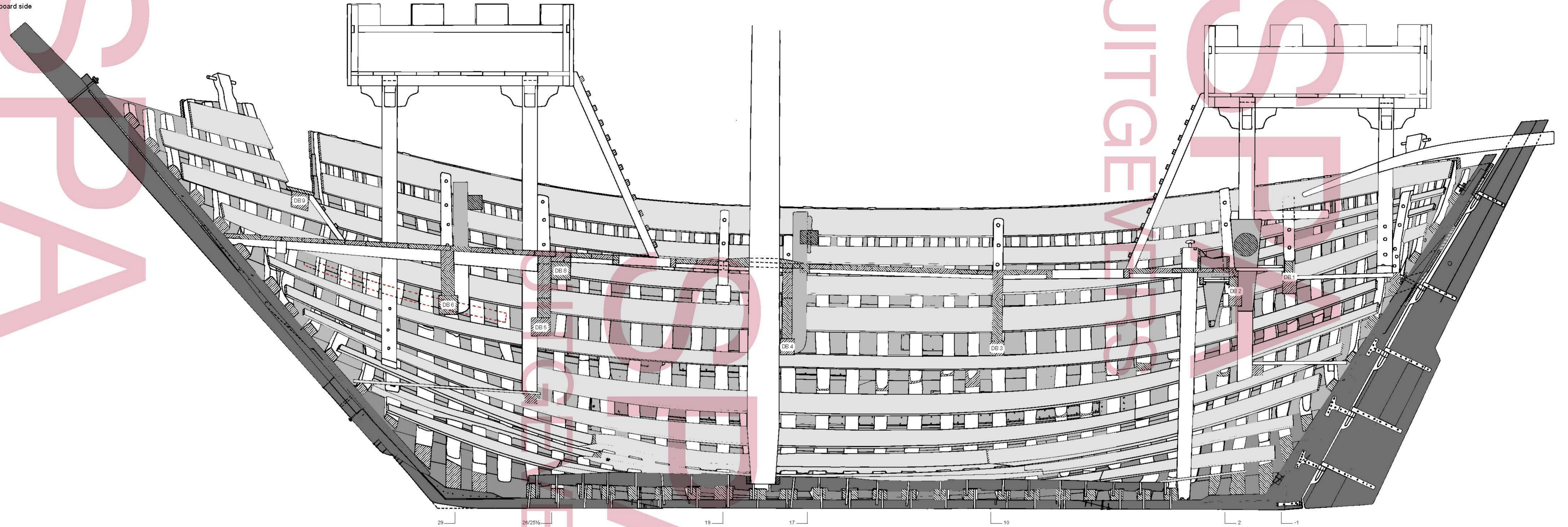
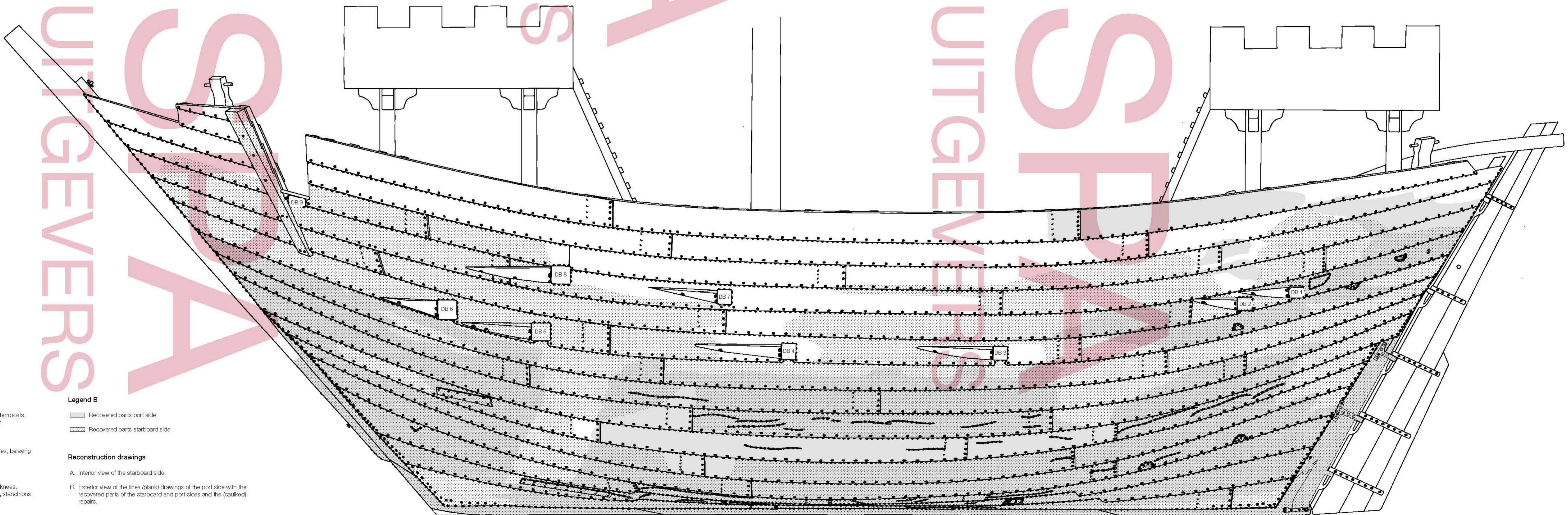


A. Interior view of the starboard side



B. Exterior view



Legend A

- Keel plank, stern- and stem hooks, stern- and stemposts, false stem and stem, mast step, keelson, rudder
- Floor timbers
- Shell planks, repair planks on the shell, windlasses, belaying racks, drain, sides of the castles
- Ceiling boards, decking of the castles
- Frames, deck beams, crossbeams, crossbeam knees, connecting beams, stingers, deck construction, stanchions supporting the castles, mast, pump.
- ▨ Cross-out wood
- ▤ Later installed shelf clamp
- DB 2 Crossbeam number
- e Frame number

Legend B

- Recovered parts port side
- ▨ Recovered parts starboard side

Reconstruction drawings

- A. Interior view of the starboard side.
- B. Exterior view of the lines (plank) drawings of the port side with the recovered parts of the starboard and port sides and the (caulked) repairs.

